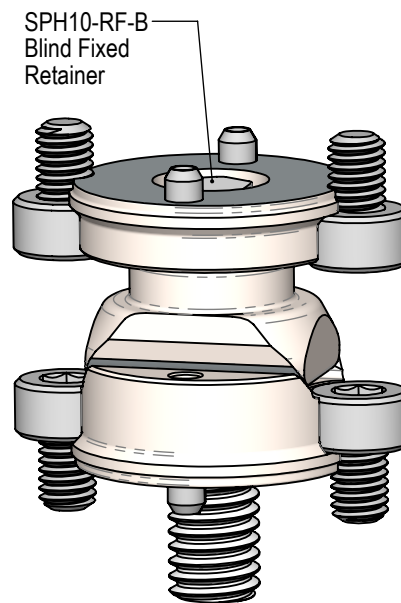
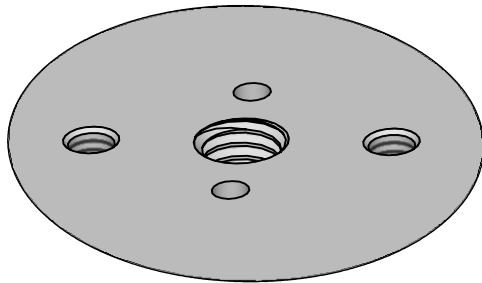
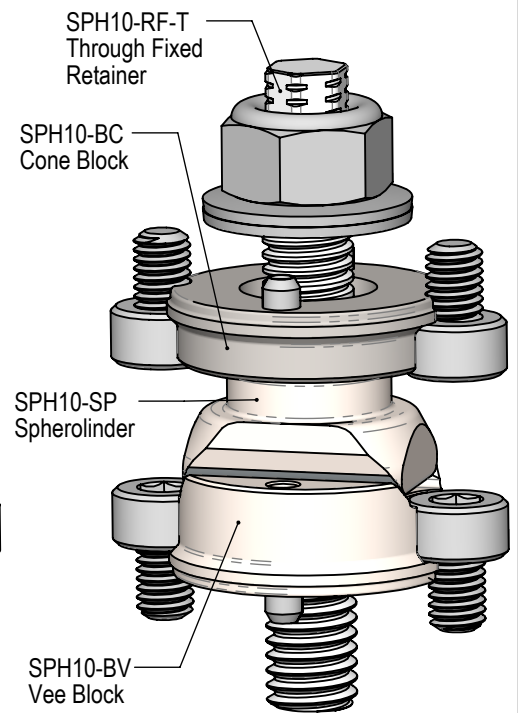


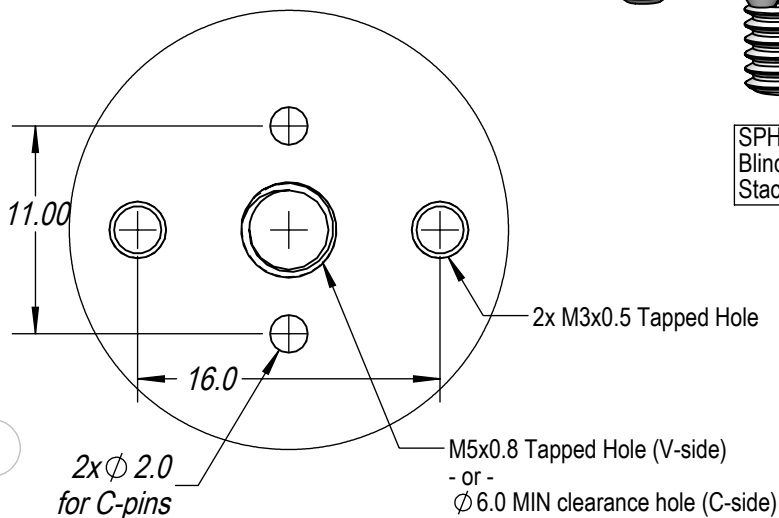
Standard flat interface
(shear carried by C pins)



SPH10-STK-FR-B
Blind Fixed Retainer Stack



SPH10-STK-FR-T
Through Fixed Retainer Stack



© 2025

g2 Engineering

16991 McGill Rd, Saratoga, CA 95070 650-605-4500 inbox@g2-engineering.com

TITLE

SPH10-STK-FR(F) Fixed Retainer Stack (Flat)

Ver.

mm

DATE

2/22/2026 8:46:40 AM

Eng

BLH

MATERIAL

Stainless 440c, 17-4PH

SURFACE TREATMENT

SCALE

5:2



SHEET 1 OF 1